



## Lesson B2-02 | High Intermediate | CEFR B1

### Past Passive

Use the words in the Grammar Challenge to complete the gaps.

#### Conversation 1

**Man:** When was this subway built?

**Woman:** It was \_\_\_\_\_ about 30 years ago.

**Man:** It still \_\_\_\_\_ pretty new.

**Woman:** Yes, it was \_\_\_\_\_ last year.

**Man:** Well, they did a \_\_\_\_\_ job.

**Woman:** I'll say.

#### Conversation 2

**Man:** What happened to the old stadium?

**Woman:** It was \_\_\_\_\_ down last year.

**Man:** Why did they tear it \_\_\_\_\_?

**Woman:** It was \_\_\_\_\_ by the hurricane three years ago.

**Man:** Oh, I remember that.

**Woman:** Yeah, a lot of damage was \_\_\_\_\_ that night.

#### Conversation 3

**Man:** Do you still go to that hotel by the lake?

**Woman:** No, it was \_\_\_\_\_ last year.

**Man:** Oh, was it \_\_\_\_\_?

**Woman:** No, it was closed and hasn't been \_\_\_\_\_.

**Man:** Oh, that's too bad.

**Woman:** Yeah, summer at the lake hasn't \_\_\_\_\_ the same since.

#### Conversation 4

**Man:** Do you still play golf?

**Woman:** No, the course was \_\_\_\_\_ last year.

**Man:** Oh, that was such a beautiful course. What \_\_\_\_\_ to it?

**Woman:** It was \_\_\_\_\_ to a park.

**Man:** Well, at least it was put to \_\_\_\_\_ use.

**Woman:** Yeah, my kids love to go there now.

### Quiz

1) The subway was \_\_\_\_\_ recently.

- a) built
- b) closed
- c) remodeled

2) What happened to the stadium?

- a) It was sold.
- b) It was torn down.
- c) It was remodeled.

3) What happened to the hotel?

- a) It was closed.
- b) It was reopened.
- c) It was remodeled.

4) What happened to the golf course?

- a) It was sold.
- b) It was shut down.
- c) It was reopened.

### Grammar Challenge

Use the words below to complete each conversation.

Con #1	Con #2	Con #3	Con #4
built	damaged	replaced	converted
nice	torn	been	shut down
looks	down	reopened	good
remodeled	done	sold	happened

### Speaking Challenge

Match the answers with the questions.

- 1) When was the report submitted?
- 2) Do you still have lessons on Sundays?
- 3) When were you born?
- 4) Who tidied up the living room?
- 5) Can I borrow your truck?

- ( \_ ) The children were asked to tidy up the living room.
- ( \_ ) The report was submitted last evening.
- ( \_ ) No, the lessons were rescheduled to Tuesdays.
- ( \_ ) Sorry, that truck was sold months ago.
- ( \_ ) I was born on February 19th, 1994.

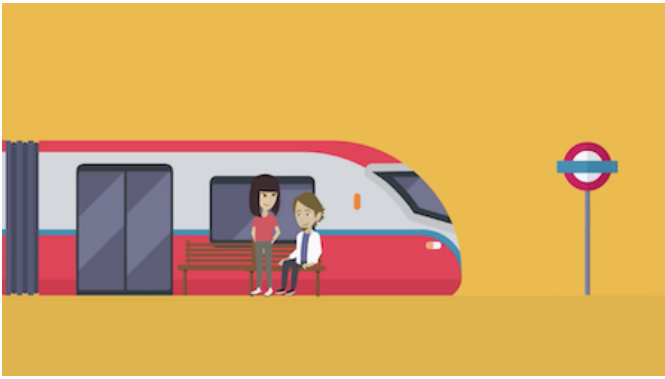
**What about you?** Share your answers to the questions.

### Go online to ello.org

Go online for the complete lesson!

1. Watch the animation video.
2. Check your answers.
3. Access more free lessons.





## Lesson B2-02 | High Intermediate | CEFR B1

### Past Passive

Use the words in the Grammar Challenge to complete the gaps.

#### Conversation 1

**Man:** When was this subway built?

**Woman:** It was **built** about 30 years ago.

**Man:** It still **looks** pretty new.

**Woman:** Yes, it was **remodeled** last year.

**Man:** Well, they did a **nice** job.

**Woman:** I'll say.

#### Conversation 2

**Man:** What happened to the old stadium?

**Woman:** It was **trn** down last year.

**Man:** Why did they tear it **down**?

**Woman:** It was **damaged** by the hurricane three years ago.

**Man:** Oh, I remember that.

**Woman:** Yeah, a lot of damage was **done** that night.

#### Conversation 3

**Man:** Do you still go to that hotel by the lake?

**Woman:** No, it was **old** last year.

**Man:** Oh, was it **replaced**?

**Woman:** No, it was closed and hasn't been **reopened**.

**Man:** Oh, that's too bad.

**Woman:** Yeah, summer at the lake hasn't **been** the same since.

#### Conversation 4

**Man:** Do you still play golf?

**Woman:** No, the course was **shut down** last year.

**Man:** Oh, that was such a beautiful course. What **happened** to it?

**Woman:** It was **converted** to a park.

**Man:** Well, at least it was put to **good** use.

**Woman:** Yeah, my kids love to go there now.

### Quiz

- 1) The subway was \_\_\_\_\_ recently. ✓  
a) built  
b) closed  
c) **remodeled**
- 2) What happened to the stadium? ✓  
a) It was sold.  
b) **It was torn down.**  
c) It was remodeled.
- 3) What happened to the hotel? ✓  
a) **It was closed.**  
b) It was reopened.  
c) It was remodeled.
- 4) What happened to the golf course? ✓  
a) It was sold.  
b) **It was shut down.**  
c) It was reopened.

### Grammar Challenge

Use the words below to complete each conversation.

Con #1	Con #2	Con #3	Con #4
built	damaged	replaced	converted
nice	trn	been	shut down
looks	down	reopened	good
remodeled	done	old	happened

### Speaking Challenge

Match the answers with the questions.

- 1) When was the report submitted?
- 2) Do you still have lessons on Sundays?
- 3) When were you born?
- 4) Who tidied up the living room?
- 5) Can I borrow your truck?

- ( 4 ) The children were asked to tidy up the living room.
- ( 1 ) The report was submitted last evening.
- ( 2 ) No, the lessons were rescheduled to Tuesdays.
- ( 5 ) Sorry, that truck was sold months ago.
- ( 3 ) I was born on February 19th, 1994.

**What about you?** Share your answers to the questions.

### Go online to ello.org

Go online for the complete lesson!

1. Watch the animation video.
2. Check your answers.
3. Access more free lessons.

